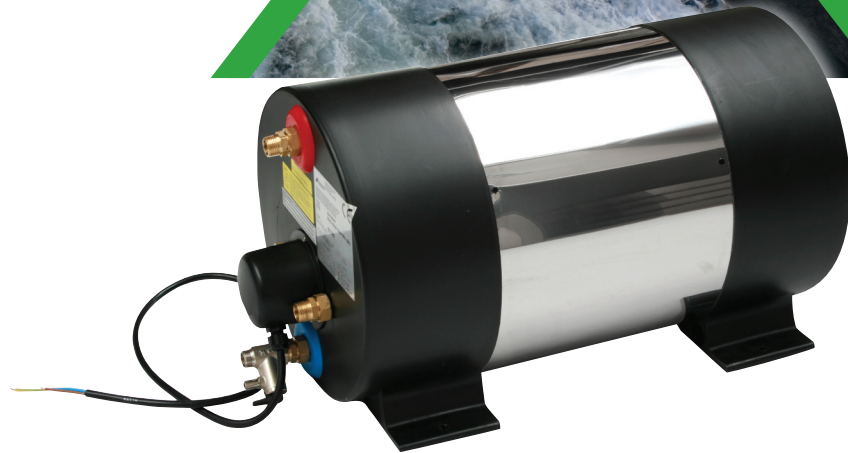




JOHNSON PUMP
AN SPX BRAND



AquaH

Marine Water Heaters

Stainless steel water heaters with dual heating as standard - electrical heating and indirect heating based on an second heat source, for example based on the cooling system from the Marine engine or generator set.

AquaH is a new innovative series of AISI 316 stainless steel water heaters, with a storage capacity of 22 up to 80 litres (from 5.3 to 19.3 gal.). The heaters are cased in AISI 304 stainless steel and is provided with a sturdy compact plastic end cover which also includes the mounting brackets.

The AquaH series is designed to withstand the marine environment. It is compact, easy to install and has a modern, attractive look.

Electrical heating elements are available in Incoloy at 500 & 1200 Watts allowing hot water production when engine heat is not available but when 230 volts AC is. Delivered with an adjustable safety thermostat for temperature adjustment while on electrical heating.

- External casing made of AISI 304 stainless steel
- Standard with compact plastic integrated mounting brackets
- Internal surface made of AISI 316L stainless steel
- Heat insulation polyurethane foam
- Safety & non return valve set at 6 Bar +/- 0,5 Bar
- Engine ware fittings 1/2 BSP

| Order no | Description |
|-------------|--|
| 56-47455-01 | AquaH Marine Water Heater 1200W / 22L 220V |
| 56-47455-03 | AquaH Marine Water Heater 500W / 22L 220V |
| 56-47456-01 | AquaH Marine Water Heater 1200W / 30L 220V |
| 56-47456-03 | AquaH Marine Water Heater 500W / 30L 220V |
| 56-47457-01 | AquaH Marine Water Heater 1200W / 45L 220V |
| 56-47457-03 | AquaH Marine Water Heater 500W / 45L 220V |
| 56-47458-01 | AquaH Marine Water Heater 1200W / 60L 220V |
| 56-47458-03 | AquaH Marine Water Heater 500W / 60L 220V |
| 56-47459-01 | AquaH Marine Water Heater 1200W / 80L 220V |
| 56-47459-03 | AquaH Marine Water Heater 500W / 80L 220V |

AquaH - Marine Water Heaters complies with the requirements of the following European Directives:

Low Voltage (LVD) Directive 2006/95/EC

- EN 60335-1 (2008): Household and Similar Electrical Appliances – Safety -Part 1: General requirements
- EN 60335-2-21 (02-2004) + A1 (07-2005) + EC (01-2008): Household and Similar Electrical Appliances – Safety - Part 2: Particular requirements for storage of water heaters

Electromagnetic Compatibility (EMC) Directive 2004/108/EC

- EN 55014 – 1 (1999) + A1 (2000) + A2(2003): Electromagnetic compatibility. Requirements for household appliances, electrical tools and similar apparatus. Emission.
- EN 55014 – 2 (1998) + A1 (2002): Electromagnetic compatibility. Requirements for household appliances, electrical tools and similar apparatus. Immunity.



Accessories

| Order no | Description |
|-------------|----------------------------------|
| 56-47464-01 | AquaH Thermostat Water Mixer Kit |



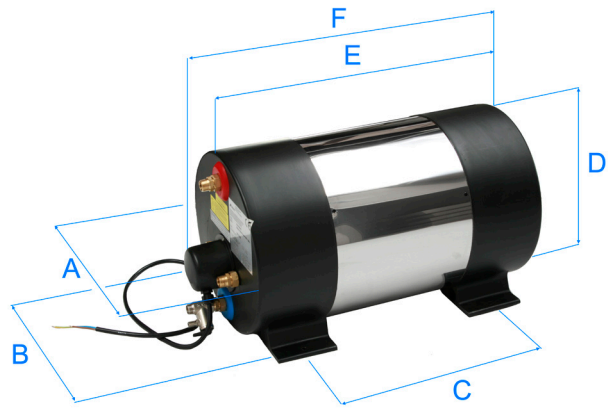
Technical Data

Dimensions

| Order no | Electrical supply | Storage capacity | Weight empty | A | B | C | D | E | F |
|-------------|-------------------|------------------|--------------|-----|-----|------|-----|------|------|
| | w | lt | kg | mm | mm | mm | mm | mm | mm |
| 56-47455-01 | 1200 | 22 | 10,0 | 322 | 290 | 235 | 325 | 410 | 485 |
| 56-47455-03 | 500 | | | | | | | | |
| 56-47456-01 | 1200 | 30 | 11,5 | 322 | 290 | 370 | 325 | 545 | 620 |
| 56-47456-03 | 500 | | | | | | | | |
| 56-47457-01 | 1200 | 45 | 15,0 | 322 | 290 | 625 | 325 | 805 | 880 |
| 56-47457-03 | 500 | | | | | | | | |
| 56-47458-01 | 1200 | 60 | 17,3 | 322 | 290 | 810 | 325 | 990 | 1065 |
| 56-47458-03 | 500 | | | | | | | | |
| 56-47459-01 | 1200 | 80 | 20,0 | 322 | 290 | 1030 | 325 | 1210 | 1285 |
| 56-47459-03 | 500 | | | | | | | | |

Electric supply 220-240 V ~ 50 Hz

Water connections 1/2"



Heating time in minutes

1200W

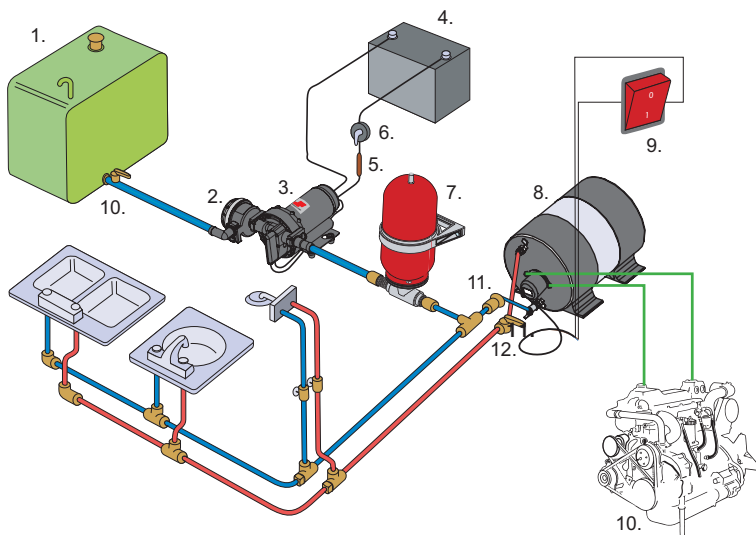
| Order no | Electrical supply | Storage capacity | Water temperature (°C) | | | | | | | |
|-------------|-------------------|------------------|------------------------|----|----|----|-----|-----|-----|-----|
| | | | 20 | 25 | 30 | 35 | 40 | 45 | 50 | 55 |
| 56-47455-01 | 1200 | 22 | 6 | 12 | 19 | 25 | 31 | 38 | 44 | 51 |
| 56-47456-01 | 1200 | 30 | 8 | 17 | 26 | 34 | 43 | 52 | 61 | 69 |
| 56-47457-01 | 1200 | 45 | 13 | 26 | 39 | 52 | 65 | 78 | 91 | 104 |
| 56-47458-01 | 1200 | 60 | 17 | 34 | 52 | 69 | 87 | 104 | 122 | 139 |
| 56-47459-01 | 1200 | 80 | 23 | 46 | 69 | 93 | 116 | 139 | 162 | 186 |

Initial temperature 15°C

500W

| Order no | Electrical supply | Storage capacity | Water temperature (°C) | | | | | | | |
|-------------|-------------------|------------------|------------------------|-----|-----|-----|-----|-----|-----|-----|
| | | | 20 | 25 | 30 | 35 | 40 | 45 | 50 | 55 |
| 56-47455-03 | 500 | 22 | 15 | 30 | 46 | 61 | 76 | 92 | 107 | 122 |
| 56-47456-03 | 500 | 30 | 20 | 41 | 62 | 83 | 104 | 125 | 146 | 167 |
| 56-47457-03 | 500 | 45 | 31 | 62 | 94 | 125 | 156 | 188 | 219 | 251 |
| 56-47458-03 | 500 | 60 | 41 | 83 | 125 | 167 | 209 | 251 | 293 | 334 |
| 56-47459-03 | 500 | 80 | 55 | 111 | 167 | 223 | 279 | 334 | 390 | 446 |

Initial temperature 15°C



1. Water tank
2. PUMProtector inlet strainer
3. Aqua Jet water pressure pump
4. Battery
5. Fuse
6. Switch
7. Accumulator tank
8. Water heater
9. ON/OFF bipolar switch
10. Motor
11. Check valve
12. Shut-off valve

SPX Johnson Pump Marine AB
 Nastagatan 19, P.O. Box 1436
 SE-701 14 Örebro, Sweden
 Phone: +46 (0)19 21 83 00 Fax: +46 (0)19 27 23 72
 E-mail: johnson-pump.marine@processequipment.sp.com

For more information about our worldwide locations, approvals, certifications, and local representatives, please visit www.johnson-pump.com or www.sp.com. SPX Corporation reserves the right to incorporate our latest design and material changes without notice or obligation. Design features, materials of construction and dimensional data, as described in this bulletin, are provided for your information only and should not be relied upon unless confirmed in writing.

Issued: 10/2009 JP-912 GB

Copyright © 2009 SPX Corporation

SPX
 WHERE IDEAS MEET INDUSTRY